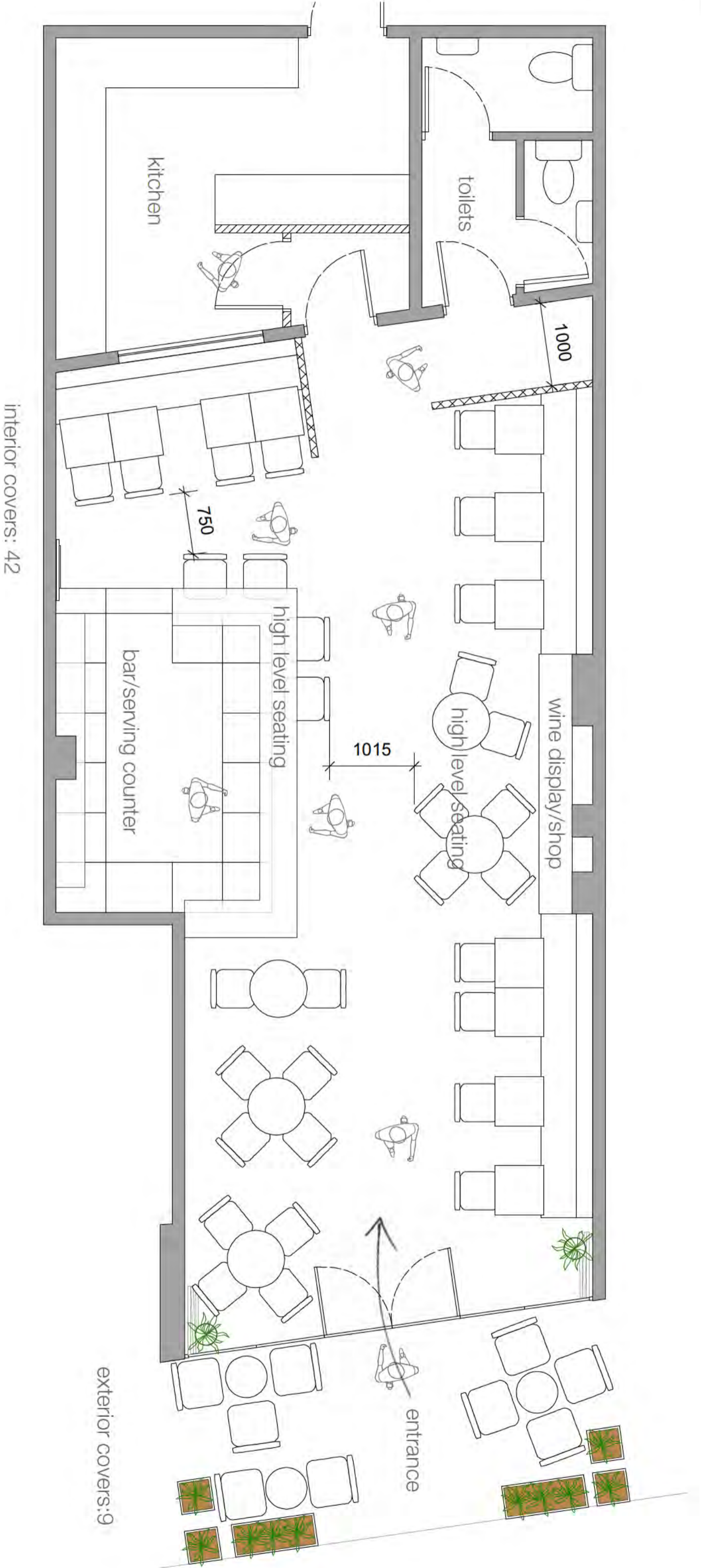
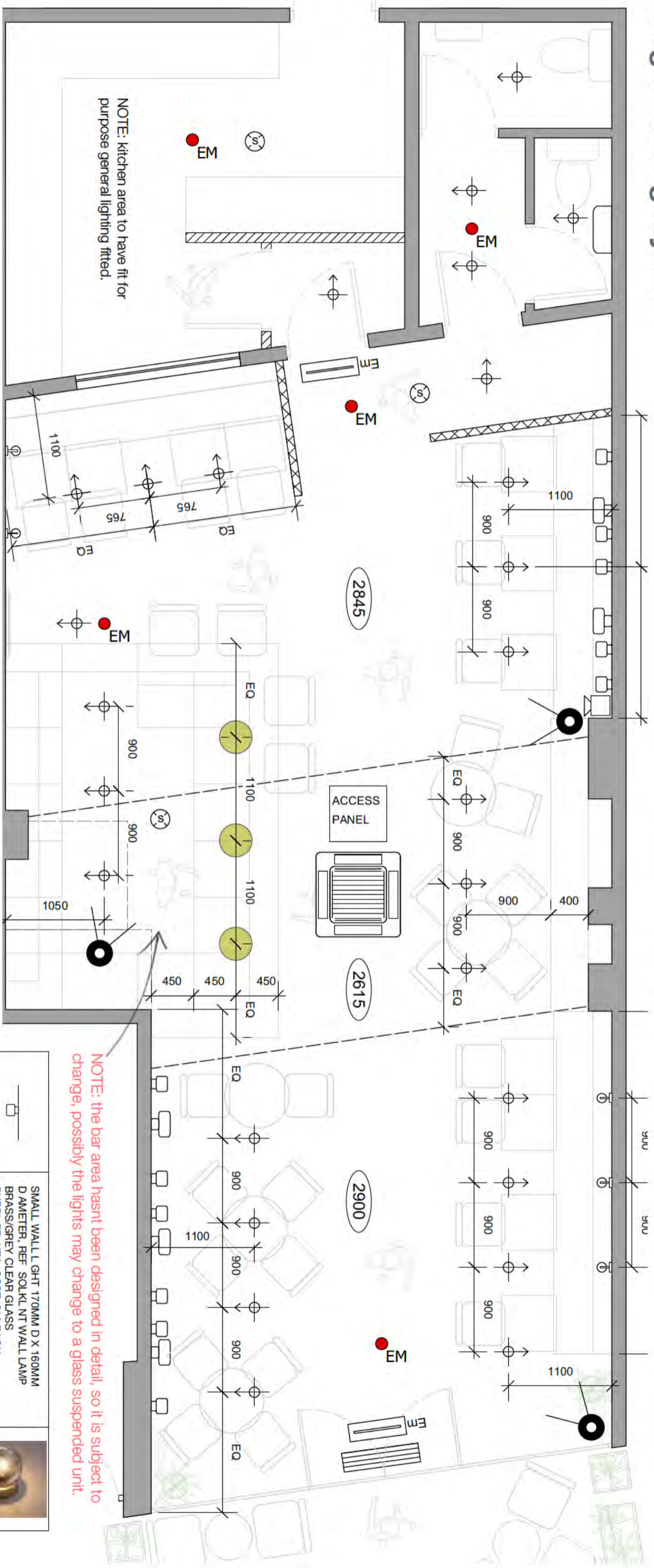


interior proposed plan layout



NOTE: Do not scale this drawing, verify all dimensions and structural details on site prior to commencement of manufacture.

lighting & ceiling layout



SYMBOL	DESCRIPTION	IMAGE
	RECESSED ADJUSTABLE DOWNLIGHT FITTING WHITE FINISH (TRIMLESS OR WITH TRIM FITTINGS ARE AVAILABLE, CLIENT TO DECIDE WHICH STYLE)	
	LED EMERGENCY DOWNLIGHT WHITE FINISH	
	SMOKE DETECTOR WHITE FINISH FITTING SPECIALIST TO ADVISE ON EXACT REQUIREMENTS FOR SPACE	
	LUMINATED EMERGENCY EXITS SIGN LOCATED AT CEILING LEVEL	
	ALARM SOUNDER	

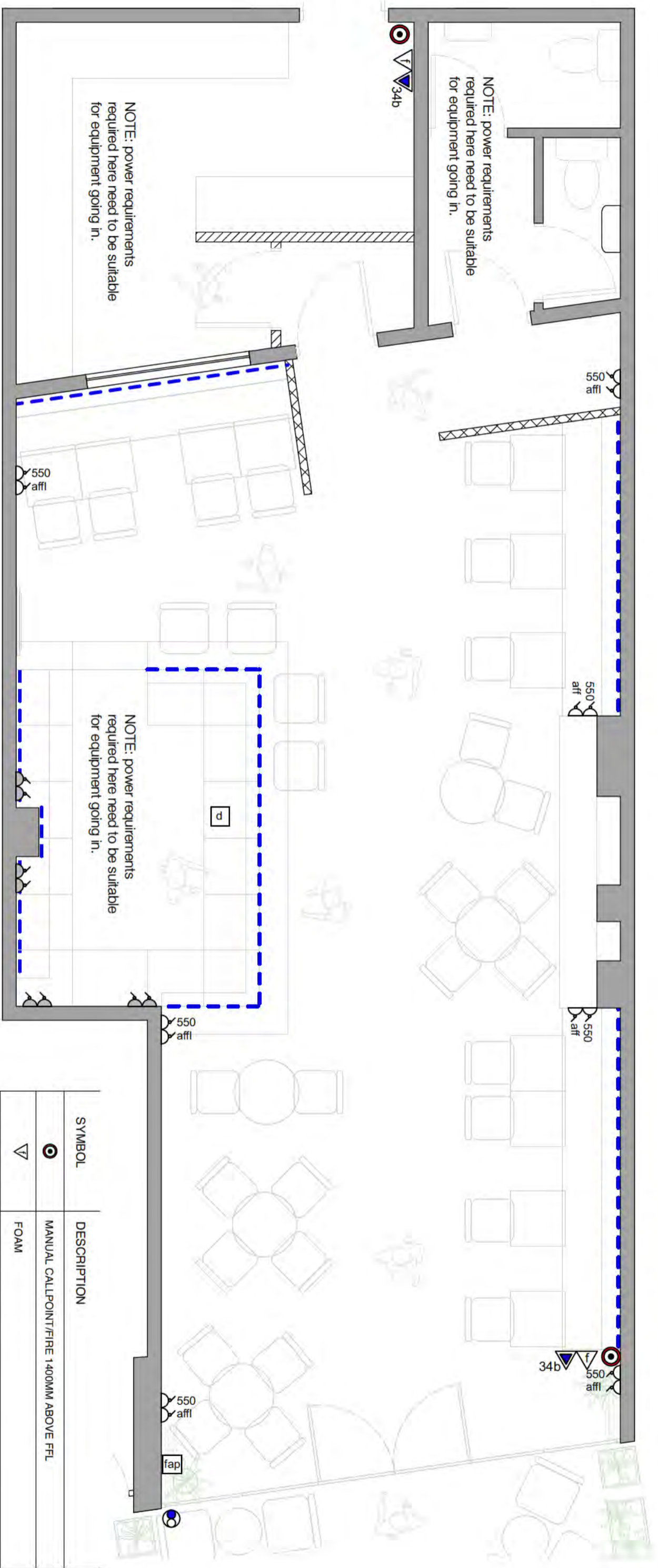
	CCTV CAMERA, WHITE FINISH AVAILABLE	
	MECEILING ACCESS PANEL TO BE PAINTED WITH SUITABLE PAINT TO MATCH CEILING COLOUR	
	AIR CONDITIONING UNIT RECESSED INTO CEILING UNIT TO BE PAINTED WITH SUITABLE PAINT TO MATCH CEILING COLOUR	
	HEAT CURTAIN MOUNTED JUST ABOVE DOOR WHITE FINISH	
	LARGE WALL LIGHT 200MM D X 270MM DIMETER, REF SOLKILNT CEILING LAMP (TO BE USED HERE AS A WALL LIGHT) BRASS/GREY CLEAR GLASS SUPPLIER KEA, COST £13 EACH	

	SMALL WALL LIGHT 170MM D X 160MM DIMETER, REF SOLKILNT WALL LAMP BRASS/GREY CLEAR GLASS SUPPLIER KEA, COST £13 EACH	
	BAR PENDANT LIGHTS, BASE OF LIGHT TO BE LOCATED 2000mm AFFL REF GRANT FROSTED GLASS GLOBE PENDANT LIGHT SUPPLIER WWW.LAMPSY.COM COST 350MM D A = £109.85 (ALTERNATIVE 250MM D A = £59.95)	
	WALL LIGHTS, INTERNA AMBER GLASS WALL LIGHT & GUNMETAL STRUCTURE FINISH REF 4777964/GKFP935 SIZE 100MM L X 370MM H X 157MM D WWW.LAREDOUTE.CO.UK COST £150 EACH	

NOTE: RECOMMENDED WHERE POSSIBLE ALL LIGHTS TO BE PUT ONTO A DIMMER SO THE LIGHT LEVELS CAN BE ADJUSTED AND/OR A SYSTEM WHICH ALLOWS YOU TO SET A DIFFERENT SET UP FOR DIFFERENT TIMES OF THE DAY E NIGHT & DAY

NOTE: Do not scale this drawing, verify all dimensions and structural details on site prior to commencement of manufacture & installation.

small powers layout



NOTE: Do not scale this drawing, verify all dimensions and structural details on site prior to commencement of manufacture & installation.

SYMBOL	DESCRIPTION
⊙	MANUAL CALLPOINT/FIRE 1400MM ABOVE FFL
∇	FOAM
▲ _{34b}	CO2 EXTINGUISHER
⌈	FIRE ALARM CONTROL PANEL
⌈ _{550 affl}	TWIN SWITCHED SOCKET W TH USB PORTS FITTED SO BASE OF SOCKET S 550MM ABOVE FFL
⌈	TWIN SWITCHED SOCKET - FOR THE BAR AREA, FITTED SO BASE OF SOCKET IS 150/200MM ABOVE WORKTOP (CLIENT TO CONFIRM IF THESE REQUIRE USB PORTS)
Ⓛ	SINGLE DATA SOCKET
⊕	HIGH LEVEL POWER SUPPLY FOR LIGHTING FOR SIGNAGE